

# High Pressure Laminate & Solid Finishes

High pressure plastic laminate is used in 90% of all computer room applications, and is the largest product used on factory laminated floor finishes.

Laminate is a one piece tile (24" x 24"), and unlike vinyl, will provide a uniform finish with no joints. HPL has the advantage of not requiring wax or maintenance that could produce static problems in the data center.



ASM-2201



ASM-2205



ASM-2204



ASM-2203



ASM-2202

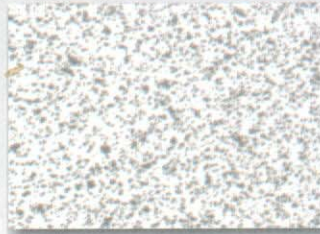
## Designer Laminate Finishes

Beautiful and durable, this eclectic line is exclusive to ASM.

*\*Available at no extra cost.*



ASM-2091



ASM-2103



ASM-2092



ASM-2107

These colors are exclusive to ASM and should be specified at time of tender

### Note

Laminates shown above are ASM's stock laminate colours. Additional colours, woodgrain finishes, etc, are available upon request.

### ASM Laminate Performance Specifications

PROPERTIES	NEMA Test Method	NEMA Standard	ASM Laminate Results
Electrical Resistance	NFPA 99	-	$1.0 \times 10^6 - 2.0 \times 10^{10}$
Stain Resistance	3.4	No effect	No effect
Boiling Water Resistance	3.5	No effect	No effect
High Temperature Resistance	3.6	Slight effect	No effect
Wear Resistance	3.13	3000 cycles/min.	3000 +
Scuff Resistance	3.16	No effect	No effect